

PAMPHLETT **SEA SCOUTS**



Information Pack
2012



**PAMPHLETT
SEA SCOUTS**

Be prepared for a new adventure

Welcome for 2012 & Introduction

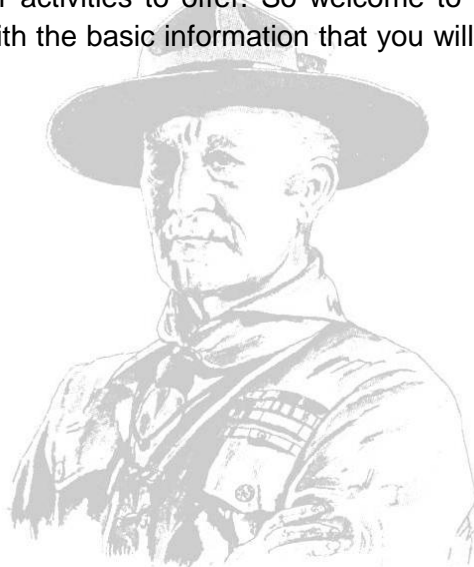
Welcome to Pamphlett Sea Scout Group in 2012. I'm sure you will find that the great game of Scouting offers a whole world of fun as well as adventurous and educational activities this year. Pamphlett Sea Scouts continues the long recognised traditions of scouting that were originally established by Lord Robert Baden Powell ('BP') of Gilwell in 1907.

Scouting commenced in 1907 when 'BP' ran an experimental camp for 20 boys at Brownsea Island in Dorset in the England. A year later he published the book '*Scouting for Boys*' and in that same year Scouting commenced in Australia. Scouting continues as a worldwide movement today providing fun and adventurous activities to youth members everywhere. Pamphlett Sea Scouts has its own long traditions being formed when two Sea Scout groups, 1st Tennyson Sea Scouts and 1st Graceville Sea Scouts, merged at the time of construction of the Pamphlett Bridge over Oxley Creek.

Pamphlett Sea Scouts operates in accordance with the aims of the Scout Association of Australia, which are quite simply:

To encourage the social, physical, intellectual, emotional and spiritual development of young people so that they may take a constructive place in society as responsible citizens, and as members of their local, national and international communities.

Our members make a promise to live in accordance with the laws of scouting, which all serve to fulfil the above aim and promote the ideal of a duty to god, duty to self and duty to others. These aims are very noble but we believe that to achieve them, youth members must enjoy scouting and have fun. It is therefore the role of the leaders of the group to build fun programs that also fulfil the aims of scouting. As a Sea Scout Group, we also have a wide range of water activities to offer. So welcome to Pamphlett Sea Scouts. This pack will provide you with the basic information that you will need to join in the fun of Sea Scouts this year.



Pamphlett Sea Scout Group
Simpson's Park via Nadine Street Graceville
PO Box 2154 Graceville Queensland 4075
www.pamphlettseascouts.org.au





Youth Activities at Pamphlett Sea Scouts

Pamphlett Sea Scouts offers scouting based activities to:

- ✦ **Joeys** (age 6 – 8) who meet on Tuesday afternoons from 4:30 to 5:30pm
- ✦ **Cubs** (age 7 ½ – 11) who meet on Tuesday night from 6 to 7:30pm
- ✦ **Scouts** (age 10½ – 15) who meet on alternating;
 - Friday nights from 7 to 9:00pm, and
 - Saturday afternoons from 2 to 5:00pm
- ✦ **Venturers** (age 14½ – 18) who meet on the opposite Fridays / Saturday to the Scouts
- ✦ **Rovers** (age 17½– 26) who meet in accordance with a program that they develop.

Parents will be required to help with transport to offsite activities.

Water Activities at Pamphlett Sea Scouts

Pamphlett Sea Scouts maintains a fleet of sailing vessels including purpose built sailing vessels and 'Lasers'. We also have a number of Canadian canoes and kayaks. We focus on development of skills that promote safety in the water, safe boating and a developed understanding of tides and weather. In 2012 we have a brand new pontoon providing access to Oxley Creek. The creek water quality is acceptable for boating. We will accordingly run regular water activities as part of the normal scouting program.

In 2011 we added two new vessels to the fleet, the *Finnegan* (named after Pamphlett's sidekick) and an as yet un-named Janette class sailing boat. The Finnegan is an excellent training vessel and the Janette is a lot of fun to sail. In the first half of 2012 the plan is to carry out maintenance / improvement activities on the fleet and later in 2012 to start building more vessels like the *Finnegan*.





**PAMPHLETT
SEA SCOUTS**

Be prepared for a new adventure

Activities at Pamphlett Sea Scout Den (The Landship Akoonah)

Unfortunately the scout den was damaged during the floods of January 2011. The damage affected the walls and floor of the upstairs den area as well as doors, electrical circuits, appliances and furniture. The den was insured through the Scouts Australia – Queensland Branch but negotiations to repair it progressed all the way through 2011. We are confident that the den will be repaired in early 2012. The work will take about three months to complete. Whilst works are underway we will fortunately be able to meet in Tennyson Scout Den which is located just across Oxley Creek on Vivian Street in Tennyson.

When the den is repaired it will be available to hire again, which help the scout group financially and ensure that the group can continue to provide great scouting and water activities. All enquiries regarding den hire should be directed to info@pamphlettseascouts.org.au.



Pamphlett Den clean up operations in January 2011.



Pamphlett Sea Scout Group
Simpson's Park via Nadine Street Graceville
PO Box 2154 Graceville Queensland 4075
www.pamphlettseascouts.org.au





**PAMPHLETT
SEA SCOUTS**

Be prepared for a new adventure

Communication in Pamphlett Sea Scout Group

Pamphlett Sea Scout Groups and Sections communicate regularly through the use of a number of 'Google Groups' that are a way of communicating by email with a large number of members without exposing individual member's email addresses or details to

anyone beyond the immediate group and only members of the groups can send to the group email address. The addresses are:

pamphlettjoey@googlegroups.com
pamphlettcubs@googlegroups.com
pamphlettscouts@googlegroups.com
pamphlettventurers@googlegroups.com

These are the routine mechanism for advising members and their families of upcoming events and changes to scheduled activities. We will contact members and their families as needed using direct email, mail or telephone as appropriate. Upon 'signing up' we will ask for contact details for all members and associated responsible adults. To ensure that we can communicate effectively under all circumstances please provide as much information as you can on the sign up forms.

Uniformed leaders are available to handle queries and concerns about scouting activities and the executive committee are on hand to manage the day to day business of the scout group. The 'who's who' of Pamphlett Sea Scout Group (at the start of 2012) are presented below:



Pamphlett Sea Scout Group
Simpson's Park via Nadine Street Graceville
PO Box 2154 Graceville Queensland 4075
www.pamphlettseascouts.org.au





**PAMPHLETT
SEA SCOUTS**

Be prepared for a new adventure

Who's Who in Pamphlett Sea Scouts

Position	Name	Phone	Email
Group Leader	Christopher Doig	0427 298 954	christopher_doig@coffey.com
Scout Section Leaders			
Joey Scout Leader	Rodney Cusack	0417 786 441	rodney_cusack@optusnet.com.au
Assistant Joey Scout Leader	<i>(female – vacant)</i>		
Cub Scout Leader	Kevin Boch	0419 775 724	kboch@optusnet.com.au
Assistant Cub Scout Leader	James Booth	0419 775 724	james@boothelectrical.com
Assistant Cub Scout Leader	Albert Corroon	0435 034 739	albert_corroon@hotmail.com
Assistant Cub Scout Leader	Wayne Middleton	0409 494 039	middletons.oz@gmail.com
Assistant Cub Scout Leader	<i>(female – vacant)</i>		
Scout Leader	Michael Bischa	0438 045 692	mikeb@olbis.com.au
Assistant Scout Leader	Louise Doig	0451 474 405	louisedoig1@bigpond.com
Assistant Scout Leader	Michael Smit		msmit@savewater.com.au
Assistant Scout Leader	Natalie Smith		nxsmith@optusnet.com.au
Venturer Leader	Vacant – contact Christopher Doig	0427 298 954	christopher_doig@coffey.com
Assistant Venturer Leader	Lara Fahey		
Rover Advisor	Tom Kaye		kayemob@bigpond.com
Group Executive Committee			
Chairman	Duncan McCardle		duncan.mccardle@gmail.com
Treasurer	Craig Stanley		craig@siargao.com.au
Secretary	Jessica Hazelwood		jessicasjh@adsl.on.net
Grants Officer	Lynette Dawson		dawsonhome@bigpond.com
Boat Master	Wayne Jorgensen		Wayne.Jorgensen@deedi.qld.gov.au



Pamphlett Sea Scout Group
Simpson's Park via Nadine Street Graceville
PO Box 2154 Graceville Queensland 4075
www.pamphlettseascouts.org.au





Membership Fees & Subs

Pamphlett Sea Scouts and the Scout Association of Australia charge fees once upon joining and then on an annual basis (in February/ March each year). You need to pay only one rolled up fee to Pamphlett and we will then pay the Scout Association on your behalf. The balance of the fees go towards the maintenance of the den; our fleet of boats; registration of trailers; leader training; equipment purchases; and payment of rates and utilities. We offset the fee impact on member families through fundraising and upon when you join.

We also offer discounts for

- ✚ The 2nd, 3rd and any subsequent members of the same family that join.
- ✚ The children of uniformed leaders.

Annual Membership Fees 2012 (at time of joining)

Month	Year	1st Scout	2nd Scout	3rd Scout	Subsequent
January	2012	\$260.00	\$240.00	\$210.00	\$180.00
February	2012	\$260.00	\$240.00	\$210.00	\$180.00
March	2012	\$260.00	\$240.00	\$210.00	\$180.00
April	2012	\$260.00	\$240.00	\$210.00	\$180.00
May	2012	\$240.00	\$220.00	\$190.00	\$160.00
June	2012	\$220.00	\$200.00	\$170.00	\$140.00
July	2012	\$200.00	\$180.00	\$150.00	\$120.00
August	2012	\$180.00	\$160.00	\$130.00	\$100.00
September	2012	\$160.00	\$140.00	\$110.00	\$80.00
October	2012	\$140.00	\$120.00	\$90.00	\$60.00
November	2012	\$120.00	\$100.00	\$70.00	\$40.00
December	2012	\$100.00	\$80.00	\$50.00	\$20.00

Figures in grey text are to be confirmed at the annual general meeting in April/May 2012 and may be dependant upon fees charged by Scouts Australia. Completed membership forms and cash/cheque/credit card must be given to the Group Leader.

Invoices: for existing members will be issued in February 2012 and are payable within 30 days.

- Leader's Fees:** Leader's membership fees are covered by the scout group.
- Leader's Discount:** A discount of \$50 is offered on membership fees for leader's children.
- Rover Levy:** Rovers are required to pay an additional levy of \$10.
- Payment:** May be made in cash, by cheque or electronic funds transfer.
- Cash:** Should be handed to the leader of the section of which your child is a member.
- Cheques:** Should be made payable to: *Pamphlett Sea Scout Group*.
- Electronic Transfers:** Should be made to following account: **Bank:** Westpac
BSB: 034 063
Acct: 31 46 27

Note: Quote the name of the youth member in the 'description' of the transfer.





Section Subs

In addition to the annual fees each section collects subs. These monies are collected either on a term or weekly basis. The subs are collected to support section activities and to help youth members develop responsibility and skills in handling and accounting for money.

Insurance

Members of the scout association and associated helpers are covered by the Scout Association's insurance public liability and other insurances. For details please visit www.scoutsqld.com.au.

Fundraising & Help

Pamphlett Sea Scout Group maintains the scout den, equipment a fleet of boats and trailers. Whilst we endeavour to cover our costs through annual fees; hall hire and grants our running costs each year are quite significant. We will ask all parents to help with fundraising, maintenance activities, section activities and on camps. A typical parent's involvement in fundraising and maintenance activities can include about four events per year (<1 day per event). However, if turning sausages at a fundraising BBQ is not your thing and you have a specific skill that might be of benefit to the group please let us know... through the year we use the services of all types of people from accountants to plumbers to electricians to mechanics.

We might also need people to help youth members complete badge work and the topics covered in badge work are many and varied. As an alternative to fundraising sometimes we will ask for 'donations' of materials to support the running of activities, we might ask for a ream of paper or some art supplies. If you or perhaps your employer can provide these types of supplies, we will be most grateful and it will save on the need for people to give up their time.

Please don't be shy, joining in group activities helps build the Pamphlett Scout Group community. We welcome all suggestions with regards to ensuring we have the funds and resources to offer a great scouting program. Upon signing on we will ask a variety of questions about your resources, professions, skills or trades and hobbies. Please add as much detail to the 'Helping Out' form as you can. If everyone lends a hand in the best way they can, the impact on every helper should even out and be minimised.

Parents will be required to assist with transport for camps and activities.





Photos & Publicity

As a member of Pamphlett Sea Scouts and Scouts Australia your child may participate in activities which may be photographed or filmed for publicity and archival purposes. This enables us to raise the profile of Scouting within the community.

**IF YOU DO NOT WANT US TO TAKE PHOTOS OF YOUR CHILD
YOU MUST LET US KNOW.**

New Members Information

If you are completely new to Pamphlett Sea Scouts you'll find the following information very useful.

Youth Member Application Form (A5)

Please read and complete all relevant sections of the youth member application form (both pages). If possible both parents should sign the form, or please provide a simple explanation if only one signature is provided (applicants over the age of 18, i.e. Rovers may sign the form themselves). Once that is done please add the relevant payment and hand it to the leader next time you come to scouts. The form includes important information about the new youth member, will ensure that they are covered by the Scout Association insurance and will also help us and the Scout Association communicate with you.

Cooling Off Period

Understandably Scouts is not for everyone. If the new youth member decides within six weeks that they do not wish to remain in scouting, please write to us requesting withdrawal from the organisation. A refund will be provided only if the request reaches Scout HQ within six weeks of first joining.

Calendar and Major Events

Our calendar of events can be found on our web site. Rather than hand out a printed calendar we recommend that members check the web site regularly as the calendar will be updated and changed regularly. The calendar can be found at www.pamphlettseascouts.org.au.

We have a number of big events each year and we expect the whole group to attend those events. We also attend a number of district events where we get to join up with the





500 or so scouts in the Brisbane West District (formerly John Oxley District and Archer District). All of our big events and the district events will be included in the section programs and will be shown on the calendar and will be publicised by email. We would particularly like everyone to turn out for the ANZAC Day March and Service that we run for the community in Tennyson.

Scout Uniform

Scouts are required to wear uniform for all formal events, normal activities, when travelling to and from camps etc. unless advised otherwise. We do not require scouts to wear uniform when undertaking water activities (because sun protection and the ability to get wet is more important) but we do request that they wear their scarf for parade.

Uniforms are available to purchase from the Scout Supply Centre at Dixon Street, Auchenflower. Uniforms and other scouting materials can be purchased in person from the shop or ordered. The scout supply centre price list is included in this information pack. The uniform comprises:

- a dark blue shirt with the colour appropriate to the section across the sleeves, yolk and collar (tan for Joeys, yellow for Cubs, green for Scouts, maroon for Venturers and red for Rovers and blue for adults/leaders);
- a blue belt
- a maroon scarf (this is standard across Queensland)
- a woggle (the standard is a leather woggle with a metal map of Queensland on it)
- a wide brimmed hat – a requirement of Pamphlett (in the day... no hat no play).

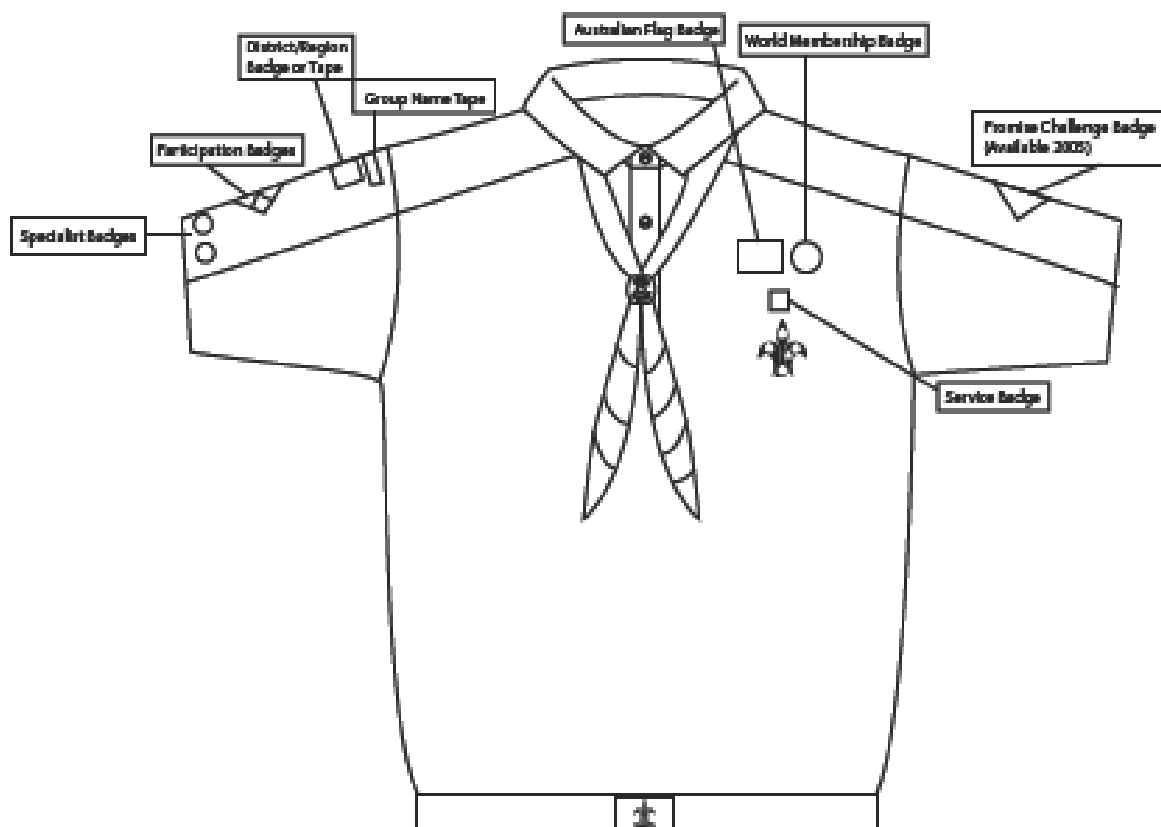
There are no 'uniform trousers' but we expect all scouts to be neat and well presented and wearing dark (e.g. navy or black) shorts or long trousers. Board shorts aren't acceptable.

Badges are an important part of the scout uniform as they signify who we are, but also what each scout has achieved. It is important that uniforms be worn with pride, badges be sewn on in the correct location and the scarf should be neatly rolled and held in place with the woggle. The pictures below show how the uniforms for the various sections should be worn:

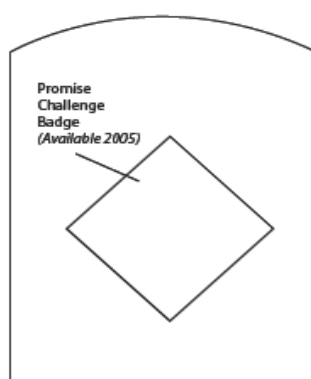




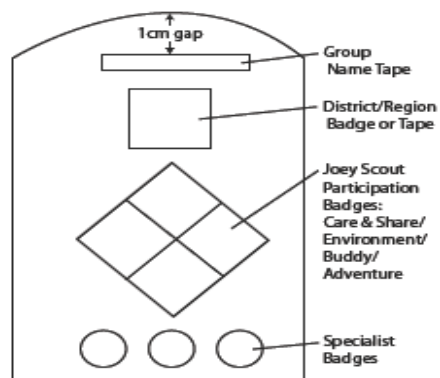
Joey Scout Uniform



JOEY SCOUT LEFT SLEEVE

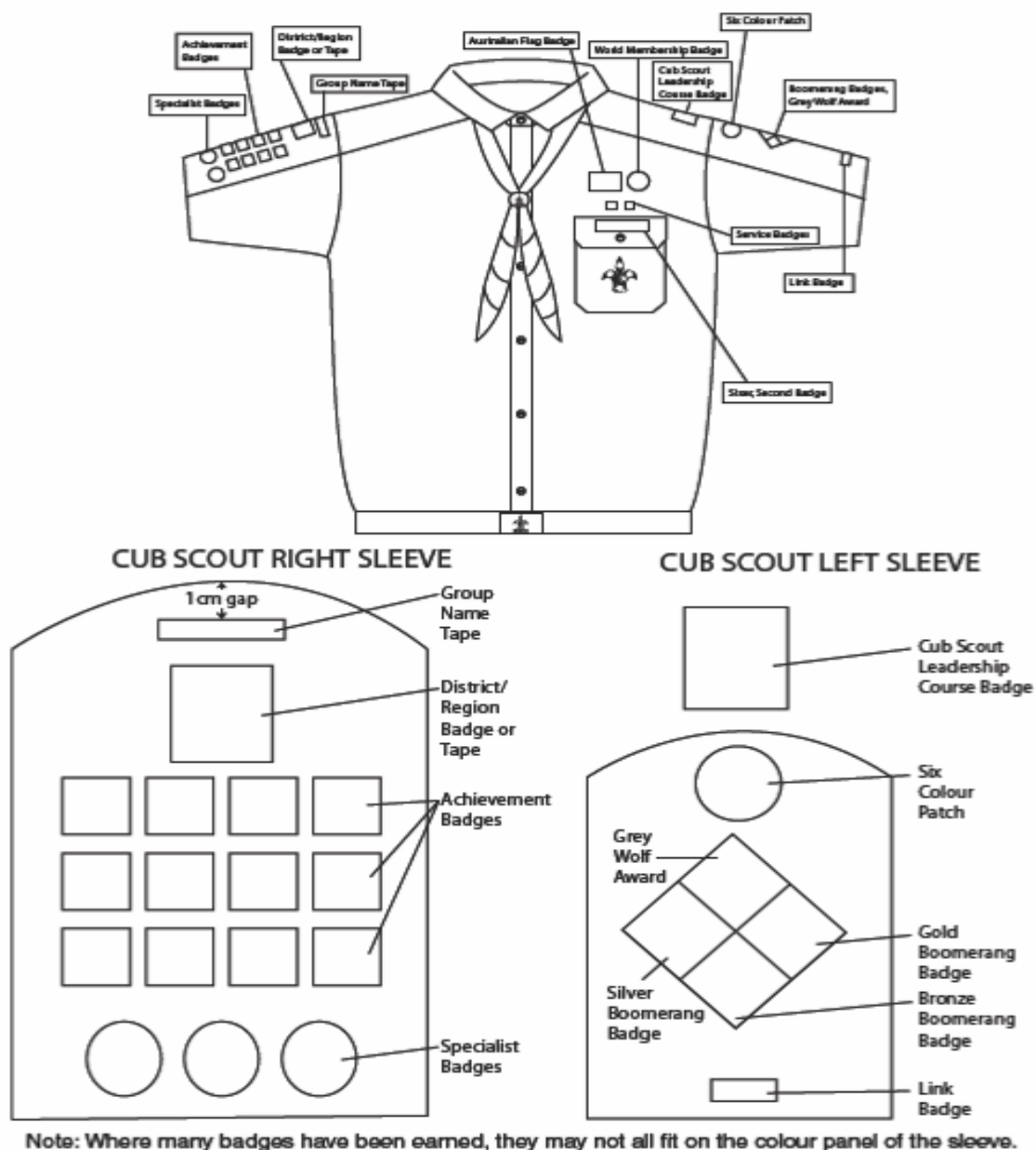


JOEY SCOUT RIGHT SLEEVE



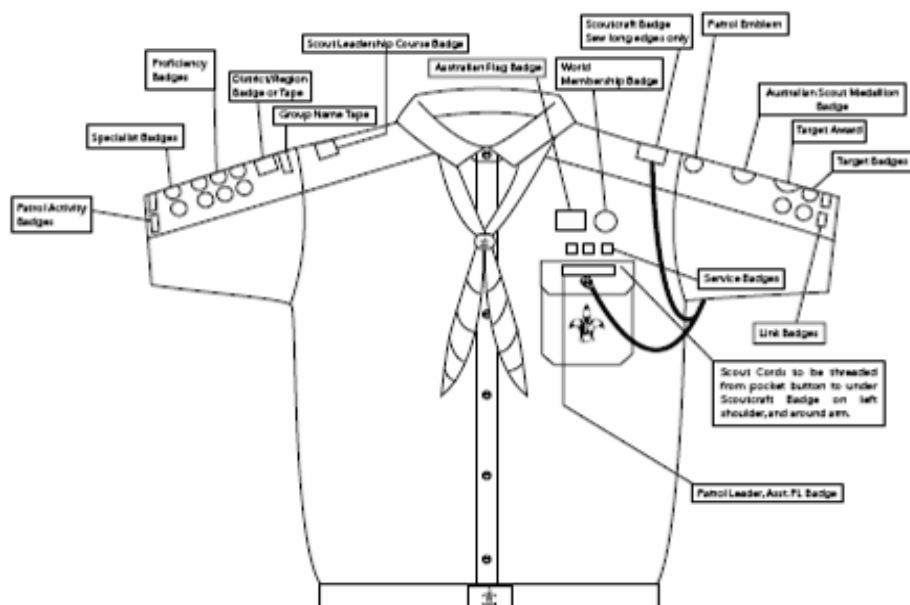


Cub Scout Uniform



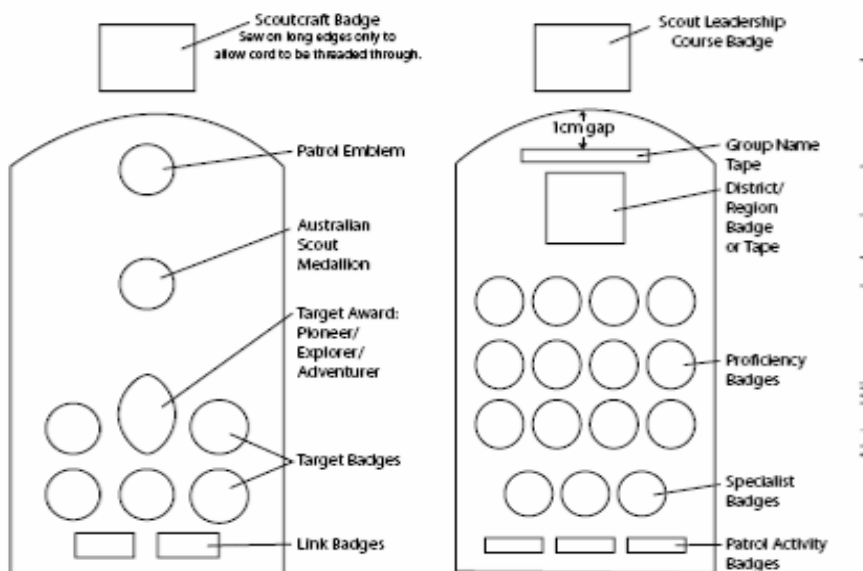


Scout Uniform



SCOUT LEFT SLEEVE

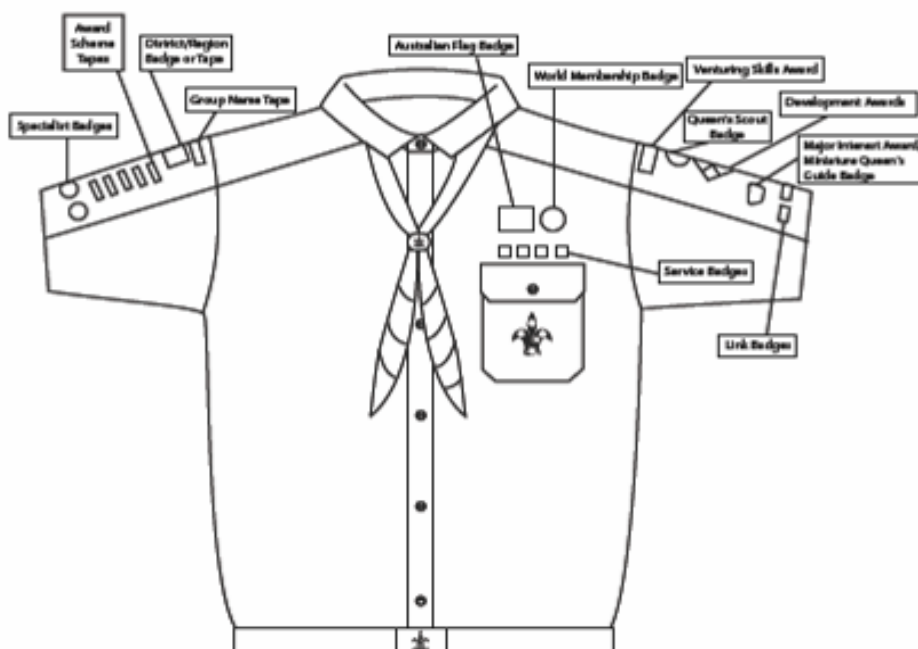
SCOUT RIGHT SLEEVE



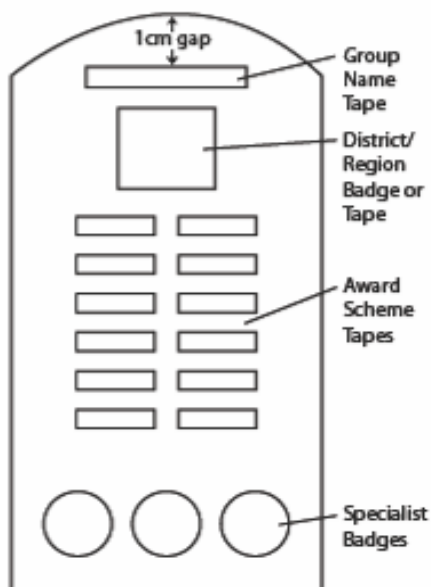
Note: Where many badges have been earned, they may not all fit on the colour panel of the sleeve.



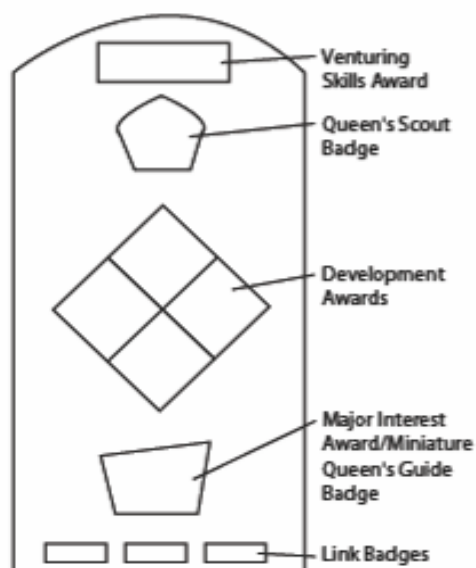
Venturer Uniform



VENTURER SCOUT RIGHT SLEEVE



VENTURER SCOUT LEFT SLEEVE



Note: Where many badges have been earned, they may not all fit on the colour panel of the sleeve.



Uniform Price List and Order Form - Last Updated May 2011

(Please note: The prices listed below are GST inclusive)

Record the quantity you require in the box for the corresponding size and type

YOUTH UNIFORMS	PRICE	6	8	10	12	14	16	18	20	22	24
Joey Scout - Polo Shirt	\$29.95							N/A	N/A	N/A	N/A
Cub Scout - Polo Shirt	\$29.95	N/A									N/A
Cub Scout - Button Up Shirt	\$39.95	N/A							N/A	N/A	N/A
Scout - Polo Shirt	\$29.95	N/A	N/A								
Scout - Button Up Shirt	\$39.95	N/A	N/A								N/A

ADULT UNIFORMS	PRICE	XXS	XS	S	M	L	XL	2XL	3XL	4XL	5XL	6XL	7XL
Venturer Scout - Button Up Shirt	\$39.95	N/A							N/A	N/A	N/A	N/A	N/A
Rover - Polo Shirt	\$29.95	N/A				N/A					N/A	N/A	N/A
Rover - Button Up Shirt	\$44.95										N/A	N/A	N/A
Leader - Polo Shirt	\$39.95	N/A											
Leader - Button Up Shirt	\$49.95	N/A											

ADULT UNIFORMS	PRICE	10	12	14	16	18	20	22	24	26
Women's - Button Up Shirt	\$49.95									

BELTS	PRICE	80cm	120cm	160cm
Belts Navy Woven	\$14.95			

SCARVES	PRICE	Maroon
Small	\$9.00	
Large	\$11.50	

WOGGLES	PRICE
Queensland Woggle	\$3.85

HATS	PRICE	XS 53cm	S 55cm	M 57cm	L 59cm	XL 61cm
Crushable Wool Hat	\$69.95					
		XS/S 56cm	M/L 58cm	XL 61cm		
Wide Brim Surf Hat	\$12.95					
Peaked Cap (One size)	\$9.95					
		54cm	58cm	61cm		
Bucket Hat	\$9.95					



PLEASE NOTE:

Rover Polo shirts have been discontinued.
- some sizes still available – please contact us for details.

See over for Payment details, Postage and Handling charges and sizing chart

JACKETS – YOUTH		PRICE	8	10	12	14	16	18	
Youth		\$49.95							
JACKETS – ADULT		PRICE	XS	S	M	L	XL	2XL	3XL
Adult		\$69.95							
ZIP OFF PANTS - YOUTH		PRICE	8	10	12	14	16	18	
Youth (Stone)		\$49.95							
ZIP OFF PANTS - ADULT		PRICE	XS	S	M	L	XL	2XL	
Adult (Stone)		\$69.95							

RECORD BOOKS	PRICE	CUB SCOUT	SCOUT	VENT. SCOUT	ROVER
	\$9.95				

PLEASE CHECK WITH YOUR GROUP BEFORE ORDERING RECORD BOOKS

AMOUNT PAYABLE

Items Total	\$
Post & Handling	\$
Order Total	\$

(All prices subject to change without notice)

PAYMENT DETAILS

PLEASE MAKE CHEQUES OR MONEY ORDERS PAYABLE TO: "SCOUT SUPPLY CENTRE"
PLEASE PRINT

FIRST NAME:	SURNAME:
POSTAL ADDRESS:	
POSTCODE:	
HOME TELEPHONE ()	BUSINESS ()
MOBILE:	FAX ()
EMAIL:	
GROUP NAME:	
CREDIT CARD DETAILS: <input type="checkbox"/> MASTERCARD <input type="checkbox"/> VISA <input type="checkbox"/> AMEX	
NAME ON CARD:	
CREDIT CARD NO:	EXPIRY DATE:
CCV NO (ON BACK OF CARD)	SIGNATURE:

Please forward all mail orders via phone, fax, email or post Monday to Friday 9.00 am – 5.00 pm.

POSTAGE CHARGES

	Please indicate required service	Parcels up to 500 g eg: 1 shirt, 1 scarf, 1 woggle, 1 hat	Parcels 500g – 3kg
Parcel Post satchels		\$6.20	\$10.50
Express Post satchels (enables tracking)		\$8.50	\$12.50

Quotes for postage for larger orders are available on request.

Payment including postage must be received with orders as we do not offer personal accounts.

RETURN POLICY: We are happy to exchange/credit faulty goods, or goods ordered by incorrect sizing/colour, however all returns must be accompanied by a copy of the original invoice and received by us within 30 days of the original sale. All goods must have original price tag in place on garments.

SCOUT UNIFORM SIZE CHART

YOUTH SIZES	6	8	10	12	14	16	18	20	22	24		
POLO: Half Chest	42	43	45	47	49	51	53	55	58	63		
POLO: Length	58	60	62	64	66	68	70	74	77	79		
BUTTON: Half Chest	N/A	44	46	48	51	53	55	57	59	N/A		
BUTTON: length	N/A	62	65	67	69	71	73	74	77	N/A		
WOMEN'S LEADER SHIRT			10	12	14	16	18	20	22	24	26	
Half Chest	N/A	N/A	50	53	56	61	65	68	70	72	75	
Length	N/A	N/A	69	69	69	69	70	72	73	74	76	
Hip	N/A	N/A	56	56	59	63	66	69	74	76	82	
ADULT SIZES	XXS	XS	S	M	L	XL	XXL	3XL	4XL	5XL	6XL	7XL
BUTTON: Half Chest	48	53	57	59	61	65	68	70	74	76	79	85
BUTTON: length	65	67	74	79	79	80	81	82	84	89	91	93

ALL SIZES IN CENTIMETRES AND ARE AS ACCURATE AS POSSIBLE BUT SOME VARIATIONS MAY OCCUR

Brisbane: 32 Dixon Street, AUCHENFLOWER 4066
PO Box 520, TOOWONG 4066
Telephone: (07) 3721 5724
Fax: (07) 3870 4960
Email: sales@scoutsupply.com.au

Monday – Friday 9.00 am – 5.00 pm
Saturday 9.00 am – 3.00 pm except during School Holidays
Closed Public Holidays

Also closed for 3 days around 31st March and 30th September for Stocktakes

Please check out www.scoutsupply.com.au for further information on closure dates

Half Chest
(underarm to
underarm)

